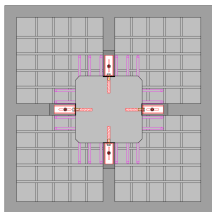
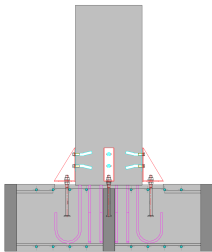


CONSTRUCTION SYSTEMS COMPARISON - COST ANALYSIS

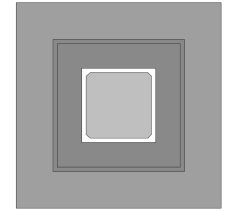
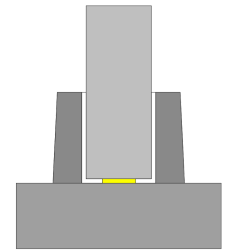
Precast PAD Foundation VS Traditional cast-in-place footing and pocket



PRECAST PAD FOUNDATION (FOOTING) - MONACHINO 9.8 x 9.8 x 2 ft						
ITEM	U. M.	QUANTITY	US\$ / U. M.	COST	NOTE	
PRECAST PAD FOUNDATION (FOOTING)	Steel - Reinforcing bars (only bent - our production process does not need rebars binding)	lb	1102	US\$ 0,35	US\$ 385,70	Fe B 44k 5,7 lb/ft³ (The cost does not include overhead costs and business profits)
	Factory produced concrete	ft³	42,00	US\$ 1,80	US\$ 75,60	Rck 30 N/mm² S4 (The cost does not include overhead costs and business profits)
	Labor	Hours	3	US\$ 30,55	US\$ 91,65	
	Total				US\$ 552,95	
	Overhead costs				US\$ 165,89	30%
	Total costs				US\$ 718,84	
	Minimum ex-works sales price				US\$ 898,54	Coefficient 1,25 (The cost includes business profits)
	Amortization of the formworks				US\$ 18,00	
	Royalty				US\$ 91,65	10%
	Transport			US\$610,00	US\$ 76,25	ml 125 / 8 precast elements
Assembly				US\$ 43,00	4 precast foundations x 1 hour (2 unskilled workers + 1 crane)	
Minimum sales price with transport and assembly				US\$1.127,45		
Assembly system (Column-Foundation)	nr	4	US\$ 12,50	US\$ 50,00	4 Anchor Bolts and 8 Threaded Coupler	
ACTIVITIES THAT ARE CARRIED OUT IN THE WORKSITE	Excavation	ft³	253,58	US\$ 0,19	US\$ 48,18	10,5×10,5×2,3 ft (with overhead costs and business profits)
	Concrete in situ	ft³	150,08	US\$ 2,63	US\$ 394,71	Rck 30 N/mm² S4 (with overhead costs and business profits)
	Backfilling	ft³	32,68	US\$ 0,13	US\$ 4,09	Excavation - Foundation (with overhead costs and business profits)
TOTAL PRICE				US\$1.624,42		



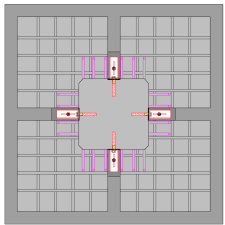
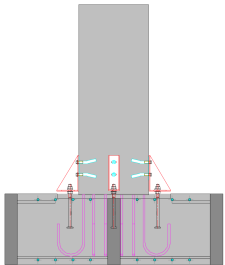
TRADITIONAL CAST-IN-PLACE FOOTING WITH POCKET (SOCKET) 9.8 x 9.8 x 2 ft						
ITEM	U. M.	QUANTITY	US\$ / U. M.	COST	NOTE	
ACTIVITIES THAT ARE CARRIED OUT IN THE WORKSITE	Steel - Reinforcing bars (footing base)	lb	1102	US\$ 0,61	US\$ 672,22	Fe B 44k 5,7 lb/ft³ (with overhead costs and business profits)
	Steel - Reinforcing bars (Pocket)	lb	455	US\$ 0,61	US\$ 277,55	Fe B 44 k (with overhead costs and business profits)
	Formwork (footing base)	ft²	78,40	US\$ 3,05	US\$ 239,12	9,8×2×4 (with overhead costs and business profits)
	Formwork (Pocket)	ft²	118,08	US\$ 3,05	US\$ 360,14	(4,9×3,6×4) + (3,3×3,6×4), (with overhead costs and business profits)
	Excavation (Pocket)	ft³	476,10	US\$ 0,19	US\$ 90,46	11,5×11,5×3,6 ft (with overhead costs and business profits)
	Concrete in situ (Pocket)	ft³	47,23	US\$ 2,63	US\$ 124,22	Pocket (4,9×4,9×3,6) ft - Rck 30 N/mm² S4 (with overhead costs and business profits)
	Backfilling (Pocket)	ft³	389,66	US\$ 0,13	US\$ 48,71	Excavation - Pocket (with overhead costs and business profits)
	Excavation (footing base)	ft³	304,18	US\$ 0,19	US\$ 57,79	11,5×11,5×2,3 ft (with overhead costs and business profits)
	Concrete in situ (footing base)	ft³	192,08	US\$ 2,63	US\$ 505,17	Footing base 9,8×9,8×2 ft (with overhead costs and business profits)
	Backfilling (footing base)	ft³	83,28	US\$ 0,13	US\$ 10,41	Excavation - Footing base (with overhead costs and business profits)
Mortar for filling between column and pocket	ft³	14,87	US\$ 2,63	US\$ 39,10		
TOTAL PRICE				US\$2.424,90		
PERCENTAGE SAVINGS				33%		
SAVING MADE BY USING OUR CONSTRUCTION SYSTEM				US\$ 800,47		



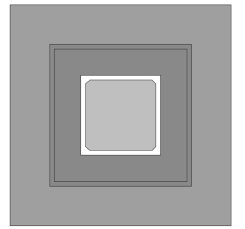
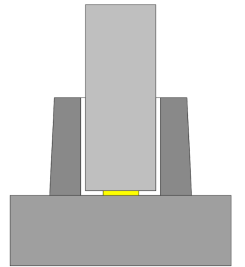
CONSTRUCTION SYSTEMS COMPARISON - COST ANALYSIS
Precast PAD Foundation VS Traditional cast-in-place footing and precast pocket



PRECAST PAD FOUNDATION (FOOTING) - MONACHINO 9.8 x 9.8 x 2 ft						
ITEM	U. M.	QUANTITY	US\$ / U. M.	COST	NOTE	
PRECAST PAD FOUNDATION (FOOTING)	Steel - Reinforcing bars (only bent - our production process does not need rebars binding)	lb	1102	US\$ 0,35	US\$ 385,70	Fe B 44k 5,7 lb/ft³ (The cost does not include overhead costs and business profits)
	Factory produced concrete	ft³	42,00	US\$ 1,80	US\$ 75,60	Rck 30 N/mm² S4 (The cost does not include overhead costs and business profits)
	Labor	Hours	3	US\$ 30,55	US\$ 91,65	
	Total				US\$ 552,95	
	Overhead costs				US\$ 165,89	30%
	Total costs				US\$ 718,84	
	Minimum ex-works sales price				US\$ 898,54	Coefficient 1,25 (The cost includes business profits)
	Amortization of the formworks				US\$ 18,00	
	Royalty				US\$ 91,65	10%
	Transport			US\$ 610,00	US\$ 76,25	ml 125 / 8 precast elements
	Assembly				US\$ 43,00	4 precast foundations x 1 hour (2 unskilled workers + 1 crane)
	Minimum sales price with transport and assembly				US\$1.127,45	
	Assembly system (Column-Foundation)	nr	4	US\$ 12,50	US\$ 50,00	4 Anchor Bolts and 8 Threaded Coupler
	ACTIVITIES THAT ARE CARRIED OUT IN THE WORKSITE	Excavation	ft³	253,58	US\$ 0,19	US\$ 48,18
Concrete in situ		ft³	150,08	US\$ 2,63	US\$ 394,71	Rck 30 N/mm² S4 (with overhead costs and business profits)
Backfilling		ft³	32,68	US\$ 0,13	US\$ 4,09	Excavation - Foundation (with overhead costs and business profits)
TOTAL PRICE				US\$1.624,42		



TRADITIONAL CAST-IN-PLACE FOOTING WITH PRECAST POCKET (SOCKET) 9.8 x 9.8 x 2 ft							
ITEM	U. M.	QUANTITY	US\$ / U. M.	COST	NOTE		
PRECAST POCKET	Steel - Reinforcing bars (Precast Pocket)	lb	455	US\$ 0,44	US\$ 200,20	Fe B 44 k (The cost does not include overhead costs and business profits)	
	Factory produced concrete (Precast Pocket)	ft³	47,23	US\$ 1,80	US\$ 85,02	Pocket (4,9×4,9×3,6) ft Rck 30 N/mm² S4 (The cost does not include overhead costs and business profits)	
	Labor	Hours	4	US\$ 30,55	US\$ 122,20		
	Total				US\$ 407,42		
	Overhead costs				US\$ 122,23	30%	
	Total costs				US\$ 529,64		
	Minimum ex-works sales price				US\$ 662,05	Coefficient 1,25 (The cost includes business profits)	
	Amortization of the formworks				US\$ 18,00		
	Transport			US\$610,00	US\$ 76,25	ml 125 / 8 precast elements	
	Assembly				US\$ 43,00	4 precast pocket x 1 hour (2 unskilled workers + 1 crane)	
	Minimum sales price with transport and assembly				US\$ 799,30		
	ACTIVITIES THAT ARE CARRIED OUT IN THE WORKSITE	Excavation (Precast Pocket)	ft³	476,10	US\$ 0,19	US\$ 90,46	11,5×11,5×3,6 ft (with overhead costs and business profits)
		Formwork (footing base)	ft²	78,40	US\$ 3,05	US\$ 239,12	9,8×2×4 (with overhead costs and business profits)
		Excavation (footing base)	ft³	304,18	US\$ 0,19	US\$ 57,79	11,5×11,5×2,3 ft (with overhead costs and business profits)
Steel - Reinforcing bars (footing base)		lb	1102	US\$ 0,61	US\$ 672,22	Fe B 44k 5,7 lb/ft³ (with overhead costs and business profits)	
Concrete in situ (footing base)		ft³	192,08	US\$ 2,63	US\$ 505,17	Footing base 9,8×9,8×2 ft (with overhead costs and business profits)	
Backfilling (Precast Pocket)		ft³	389,66	US\$ 0,13	US\$ 48,71	Excavation - Pocket (with overhead costs and business profits)	
Backfilling (footing base)	ft³	83,28	US\$ 0,13	US\$ 10,41	Excavation - Footing base (with overhead costs and business profits)		
Mortar for filling between column and pocket	ft³	14,87	US\$ 2,63	US\$ 39,10			
TOTAL PRICE				US\$2.462,29			
PERCENTAGE SAVINGS				34%			
SAVING MADE BY USING OUR CONSTRUCTION SYSTEM				US\$ 837,86			



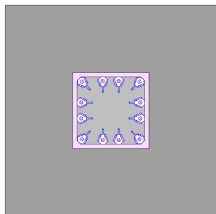
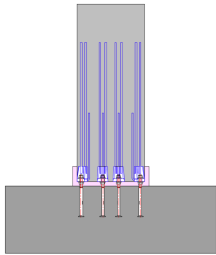
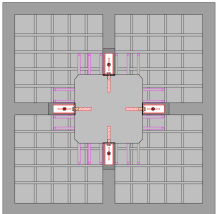
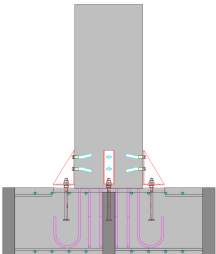
CONSTRUCTION SYSTEMS COMPARISON - COST ANALYSIS -
Precast PAD Foundation VS Traditional cast-in-place footing with connection systems such as PEIKKO or HALFEN



PRECAST PAD FOUNDATION (FOOTING) - MONACHINO 9.8 x 9.8 x 2 ft						
ITEM	U. M.	QUANTITY	US\$ / U. M.	COST	NOTE	
PRECAST PAD FOUNDATION (FOOTING)	Steel - Reinforcing bars (only bent - our production process does not need rebars binding)	lb	1102	US\$ 0,35	US\$ 385,70	Fe B 44k 5,7 lb/ft³ (The cost does not include overhead costs and business profits)
	Factory produced concrete	ft³	42,00	US\$ 1,80	US\$ 75,60	Rck 30 N/mm² S4 (The cost does not include overhead costs and business profits)
	Labor	Hours	3	US\$ 30,55	US\$ 91,65	
	Total				US\$ 552,95	
Overhead costs				US\$ 165,89	30%	
Total costs				US\$ 718,84		
Minimum ex-works sales price				US\$ 898,54	Coefficient 1,25 (The cost includes business profits)	
Amortization of the formworks				US\$ 18,00		
Royalty				US\$ 91,65	10%	
Transport			US\$ 610,00	US\$ 76,25	ml 125 / 8 precast elements	
Assembly				US\$ 43,00	4 precast foundations x 1 hour (2 unskilled workers + 1 crane)	
Minimum sales price with transport and assembly				US\$1.127,45		
Assembly system (Column-Foundation)	nr	4	US\$ 12,50	US\$ 50,00	4 Anchor Bolts and 8 Threaded Coupler	
ACTIVITIES THAT ARE CARRIED OUT IN THE WORKSITE	Excavation	ft³	253,58	US\$ 0,19	US\$ 48,18	10,5x10,5x2,3 ft (with overhead costs and business profits)
	Concrete in situ	ft³	150,08	US\$ 2,63	US\$ 394,71	Rck 30 N/mm² S4 (with overhead costs and business profits)
	Backfilling	ft³	32,68	US\$ 0,13	US\$ 4,09	Excavation - Foundation (with overhead costs and business profits)
TOTAL PRICE				US\$1.624,42		

TRADITIONAL CAST-IN-PLACE FOOTING WITH BOLTED CONNECTION SUCH AS PEIKKO / HALFEN - 9.8 x 9.8 x 2 ft							
ITEM	U. M.	QUANTITY	US\$ / U. M.	COST	NOTE		
ACTIVITIES THAT ARE CARRIED OUT IN THE WORKSITE	Steel - Reinforcing bars (footing base)	lb	1102	US\$ 0,61	US\$ 672,22	Fe B 44k 5,7 lb/ft³ (with overhead costs and business profits)	
	Formwork (footing base)	ft²	78,40	US\$ 3,05	US\$ 239,12	9,8x2x4 (with overhead costs and business profits)	
	Jig				US\$ 60,00		
	Transport and assembly of the jig				US\$ 60,00		
	Expansive mortar				US\$ 98,00	The cost includes preparation and pouring	
	Additional reinforcing bars to join the Jig to the footing reinforcing cage	lb	55	US\$ 0,61	US\$ 33,55	Fe B 44 k (with overhead costs and business profits)	
	Connection systems (Column-Foundation)	nr	8	US\$ 84,00	US\$ 672,00	Anchor Bolts and Column Shoes	
	Excavation (footing base)	ft³	304,18	US\$ 0,19	US\$ 57,79	11,5x11,5x2,3 ft (with overhead costs and business profits)	
	Concrete in situ (footing base)	ft³	192,08	US\$ 2,63	US\$ 505,17	Footing base 9,8x9,8x2 ft (with overhead costs and business profits)	
	Backfilling (footing base)	ft³	83,28	US\$ 0,13	US\$ 10,41	Excavation - Footing base (with overhead costs and business profits)	
	TOTAL PRICE				US\$ 2.408,26		
	PERCENTAGE SAVINGS				33%		
	SAVING MADE BY USING OUR CONSTRUCTION SYSTEM				US\$ 783,84		

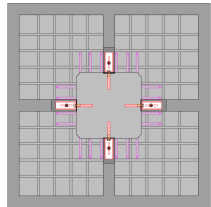
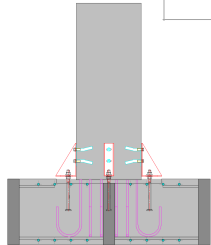
This solution is not recommended for Seismic Zones



CONSTRUCTION SYSTEMS COMPARISON - COST ANALYSIS -
Precast PAD Foundation VS Traditional cast-in-place footing with steel corrugated tubes



PRECAST PAD FOUNDATION (FOOTING) - MONACHINO 9.8 x 9.8 x 2 ft						
	ITEM	U. M.	QUANTITY	US\$ / U. M.	COST	NOTE
PRECAST PAD FOUNDATION (FOOTING)	Steel - Reinforcing bars (only bent - our production process does not need rebars binding)	lb	1102	US\$ 0,35	US\$ 385,70	Fe B 44k (The cost does not include overhead costs and business profits)
	Factory produced concrete	ft³	42,00	US\$ 1,80	US\$ 75,60	Rck 30 N/mm² S4 (The cost does not include overhead costs and business profits)
	Labor	Hours	3	US\$ 30,55	US\$ 91,65	
	Total				US\$ 552,95	
	Overhead costs				US\$ 165,89	30%
	Total costs				US\$ 718,84	
	Minimum ex-works sales price				US\$ 898,54	Coefficient 1,25 (The cost includes business profits)
	Amortization of the formworks				US\$ 18,00	
	Royalty				US\$ 91,65	10%
	Transport				US\$ 610,00	US\$ 76,25
Assembly					US\$ 43,00	4 precast foundations x 1 hour (2 unskilled workers + 1 crane)
Minimum sales price with transport and assembly					US\$1.127,45	
Assembly system (Column-Foundation)	nr	4	US\$ 12,50	US\$ 50,00	4 Anchor Bolts and 8 Threaded Coupler	
ACTIVITIES THAT ARE CARRIED OUT IN THE WORKSITE	Excavation	ft³	253,58	US\$ 0,19	US\$ 48,18	10,5×10,5×2,3 ft (with overhead costs and business profits)
	Concrete in situ	ft³	150,08	US\$ 2,63	US\$ 394,71	Rck 30 N/mm² S4 (with overhead costs and business profits)
	Backfilling	ft³	32,68	US\$ 0,13	US\$ 4,09	Excavation - Foundation (with overhead costs and business profits)
TOTAL PRICE					US\$1.624,42	



TRADITIONAL CAST-IN-PLACE FOOTING WITH STEEL CORRUGATED TUBES - 9.8 x 9.8 x 2.6 ft						
	ITEM	U. M.	QUANTITY	US\$ / U. M.	COST	NOTE
ACTIVITIES THAT ARE CARRIED OUT IN THE WORKSITE	Steel - Reinforcing bars (footing base)	lb	1102	US\$ 0,61	US\$ 672,22	Fe B 44k (with overhead costs and business profits)
	Formwork (footing base)	ft²	101,92	US\$ 3,05	US\$ 310,86	11,5x2,6x4 (with overhead costs and business profits)
	Jig for 16 corrupted tubes				US\$ 245,00	
	Transport and assembly of the jig				US\$ 123,00	
	Expansive mortar				US\$ 281,00	The cost includes preparation and pouring
	Connection systems (Column-Foundation)	nr	4	US\$ 49,00	US\$ 196,00	Anchor Bolts and Column Shoes
	Excavation (footing base)	ft³	383,53	US\$ 0,19	US\$ 72,87	11,5×11,5×2,9 ft (with overhead costs and business profits)
	Concrete in situ (footing base)	ft³	249,704	US\$ 2,63	US\$ 656,72	Footing base 9,8×9,8×2,6 ft (with overhead costs and business profits)
	Backfilling (footing base)	ft³	133,82	US\$ 0,13	US\$ 16,73	Excavation - Footing base (with overhead costs and business profits)
	TOTAL PRICE					US\$2.574,39
PERCENTAGE SAVINGS					37%	
SAVING MADE BY USING OUR CONSTRUCTION SYSTEM					US\$ 949,97	

