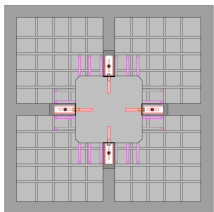
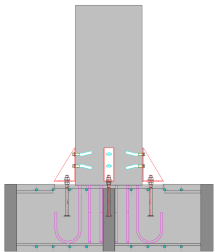


CONSTRUCTION SYSTEMS COMPARISON - COST ANALYSIS

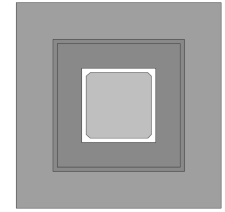
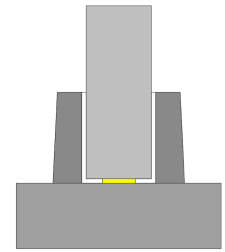
Precast PAD Foundation VS Traditional cast-in-place footing and pocket



PRECAST PAD FOUNDATION (FOOTING) - MONACHINO 11.50 x 11.50 x 2,3 ft						
ITEM	U. M.	QUANTITY	US\$ / U. M.	COST	NOTE	
PRECAST PAD FOUNDATION (FOOTING)	Steel - Reinforcing bars (only bent - our production process does not need rebars binding)	lb	1653	US\$ 0,35	US\$ 578,55	Fe B 44k 6,7 lb/ft³ (The cost does not include overhead costs and business profits)
	Factory produced concrete	ft³	57,50	US\$ 1,80	US\$ 103,50	Rck 30 N/mm² S4 (The cost does not include overhead costs and business profits)
	Labor	Hours	3	US\$ 30,55	US\$ 91,65	
	Total				US\$ 773,70	
Overhead costs				US\$ 232,11	30%	
Total costs				US\$1.005,81		
Minimum ex-works sales price				US\$1.257,26	Coefficient 1,25 (The cost includes business profits)	
Amortization of the formworks				US\$ 18,00		
Royalty				US\$ 127,53	10%	
Transport			US\$610,00	US\$ 101,67	ml 125 / 6 precast elements	
Assembly				US\$ 43,00	4 precast foundations x 1 hour (2 unskilled workers + 1 crane)	
Minimum sales price with transport and assembly				US\$1.547,46		
Assembly system (Column-Foundation)	nr	4	US\$ 12,50	US\$ 50,00	4 Anchor Bolts and 8 Threaded Coupler	
ACTIVITIES THAT ARE CARRIED OUT IN THE WORKSITE	Excavation	ft³	386,98	US\$ 0,19	US\$ 73,53	12,2x12,2x2,6 ft (with overhead costs and business profits)
	Concrete in situ	ft³	246,68	US\$ 2,63	US\$ 648,76	Rck 30 N/mm² S4 (with overhead costs and business profits)
	Backfilling	ft³	43,13	US\$ 0,13	US\$ 5,39	Excavation - Foundation (with overhead costs and business profits)
TOTAL PRICE				US\$2.325,13		



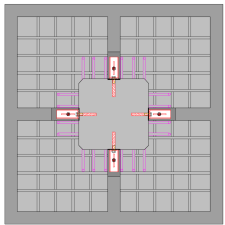
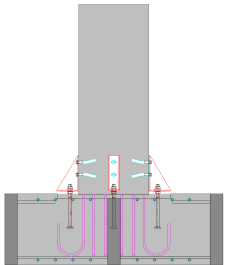
TRADITIONAL CAST-IN-PLACE FOOTING WITH POCKET (SOCKET) 11.50 x 11.50 x 2,3 ft						
ITEM	U. M.	QUANTITY	US\$ / U. M.	COST	NOTE	
ACTIVITIES THAT ARE CARRIED OUT IN THE WORKSITE	Steel - Reinforcing bars (footing base)	lb	1653	US\$ 0,61	US\$ 1.008,33	Fe B 44k 6,7 lb/ft³ (with overhead costs and business profits)
	Steel - Reinforcing bars (Pocket)	lb	610	US\$ 0,61	US\$ 372,10	Fe B 44 k (with overhead costs and business profits)
	Formwork (footing base)	ft²	105,80	US\$ 3,05	US\$ 322,69	11,5x2,3x4 (with overhead costs and business profits)
	Formwork (Pocket)	ft²	132,48	US\$ 3,05	US\$ 404,06	(5,6x3,6x4) + (3,6x3,6x4) - (with overhead costs and business profits)
Excavation (Pocket)	ft³	617,80	US\$ 0,19	US\$ 117,38	13,1x13,1x3,6 ft (with overhead costs and business profits)	
Concrete in situ (Pocket)	ft³	66,24	US\$ 2,63	US\$ 174,21	Pocket (5,6x5,6x3,6) ft - Rck 30 N/mm² S4 (with overhead costs and business profits)	
Backfilling (Pocket)	ft³	504,90	US\$ 0,13	US\$ 63,11	Excavation - Pocket (with overhead costs and business profits)	
Excavation (footing base)	ft³	446,19	US\$ 0,19	US\$ 84,78	13,1x13,1x2,6 ft (with overhead costs and business profits)	
Concrete in situ (footing base)	ft³	304,18	US\$ 2,63	US\$ 799,98	Footing base 11,5x11,5x2,3 ft (with overhead costs and business profits)	
Backfilling (footing base)	ft³	102,34	US\$ 0,13	US\$ 12,79	Excavation - Footing base (with overhead costs and business profits)	
Mortar for filling between column and pocket	ft³	14,26	US\$ 2,63	US\$ 37,49		
TOTAL PRICE				US\$3.396,93		
PERCENTAGE SAVINGS				32%		
SAVING MADE BY USING OUR CONSTRUCTION SYSTEM				US\$1.071,80		



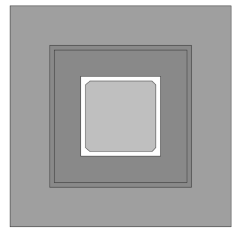
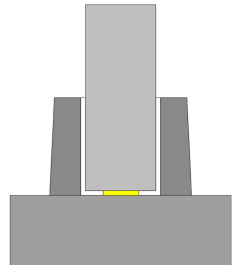
CONSTRUCTION SYSTEMS COMPARISON - COST ANALYSIS
Precast PAD Foundation VS Traditional cast-in-place footing and precast pocket



PRECAST PAD FOUNDATION (FOOTING) - MONACHINO 11.50 x 11.50 x 2,3 ft						
ITEM	U. M.	QUANTITY	US\$ / U. M.	COST	NOTE	
PRECAST PAD FOUNDATION (FOOTING)	Steel - Reinforcing bars (only bent - our production process does not need rebars binding)	lb	1653	US\$ 0,35	US\$ 578,55	Fe B 44k 6,7 lb/ft³ (The cost does not include overhead costs and business profits)
	Factory produced concrete	ft³	57,50	US\$ 1,80	US\$ 103,50	Rck 30 N/mm² S4 (The cost does not include overhead costs and business profits)
	Labor	Hours	3	US\$ 30,55	US\$ 91,65	
	Total				US\$ 773,70	
	Overhead costs				US\$ 232,11	30%
	Total costs				US\$1.005,81	
	Minimum ex-works sales price				US\$1.257,26	Coefficient 1,25 (The cost includes business profits)
	Amortization of the formworks				US\$ 18,00	
	Royalty				US\$ 127,53	10%
	Transport			US\$ 610,00	US\$ 101,67	ml 125 / 6 precast elements
	Assembly				US\$ 43,00	4 precast foundations x 1 hour (2 unskilled workers + 1 crane)
	Minimum sales price with transport and assembly				US\$1.547,46	
	Assembly system (Column-Foundation)	nr	4	US\$ 12,50	US\$ 50,00	4 Anchor Bolts and 8 Threaded Coupler
	ACTIVITIES THAT ARE CARRIED OUT IN THE WORKSITE	Excavation	ft³	386,98	US\$ 0,19	US\$ 73,53
Concrete in situ		ft³	246,68	US\$ 2,63	US\$ 648,76	Rck 30 N/mm² S4 (with overhead costs and business profits)
Backfilling		ft³	43,13	US\$ 0,13	US\$ 5,39	Excavation - Foundation (with overhead costs and business profits)
TOTAL PRICE				US\$2.325,13		



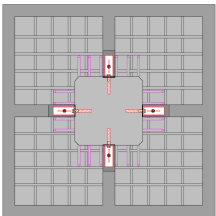
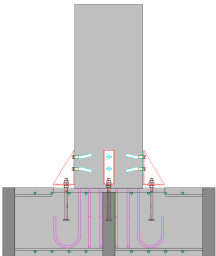
TRADITIONAL CAST-IN-PLACE FOOTING WITH PRECAST POCKET (SOCKET) 11.50 x 11.50 x 2,3 ft							
ITEM	U. M.	QUANTITY	US\$ / U. M.	COST	NOTE		
PRECAST POCKET	Steel - Reinforcing bars (Precast Pocket)	lb	610	US\$ 0,44	US\$ 268,40	Fe B 44 k (The cost does not include overhead costs and business profits)	
	Factory produced concrete (Precast Pocket)	ft³	66,24	US\$ 1,80	US\$ 119,23	Pocket (5,6×5,6×3,6) ft Rck 30 N/mm² S4 (The cost does not include overhead costs and business profits)	
	Labor	Hours	4	US\$ 30,55	US\$ 122,20		
	Total				US\$ 509,83		
	Overhead costs				US\$ 152,95	30%	
	Total costs				US\$ 662,78		
	Minimum ex-works sales price				US\$ 828,48	Coefficient 1,25 (The cost includes business profits)	
	Amortization of the formworks				US\$ 18,00		
	Transport			US\$610,00	US\$ 101,67	ml 125 / 6 precast elements	
	Assembly				US\$ 43,00	4 precast pocket x 1 hour (2 unskilled workers + 1 crane)	
	Minimum sales price with transport and assembly				US\$ 991,14		
	ACTIVITIES THAT ARE CARRIED OUT IN THE WORKSITE	Excavation (Precast Pocket)	ft³	617,80	US\$ 0,19	US\$ 117,38	13,1×13,1×3,6 ft (with overhead costs and business profits)
		Excavation (footing base)	ft³	446,19	US\$ 0,19	US\$ 84,78	13,1×13,1×2,6 ft (with overhead costs and business profits)
		Formwork (footing base)	ft²	105,80	US\$ 3,05	US\$ 322,69	11,5×2,3×4 (with overhead costs and business profits)
Steel - Reinforcing bars (footing base)		lb	1653	US\$ 0,61	US\$ 1.008,33	Fe B 44k 6,7 lb/ft³ (with overhead costs and business profits)	
Concrete in situ (footing base)		ft³	304,18	US\$ 2,63	US\$ 799,98	Footing base 11,5×11,5×2,3 ft (with overhead costs and business profits)	
Backfilling (Precast Pocket)		ft³	504,90	US\$ 0,13	US\$ 63,11	Excavation - Pocket (with overhead costs and business profits)	
Backfilling (footing base)		ft³	102,34	US\$ 0,13	US\$ 12,79	Excavation - Footing base (with overhead costs and business profits)	
Mortar for filling between column and pocket	ft³	14,26	US\$ 2,63	US\$ 37,49			
TOTAL PRICE				US\$3.437,70			
PERCENTAGE SAVINGS				32%			
SAVING MADE BY USING OUR CONSTRUCTION SYSTEM				US\$1.112,57			



CONSTRUCTION SYSTEMS COMPARISON - COST ANALYSIS -
Precast PAD Foundation VS Traditional cast-in-place footing with connection systems such as PEIKKO or HALFEN

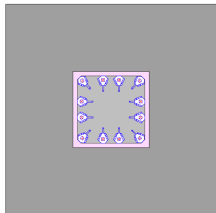
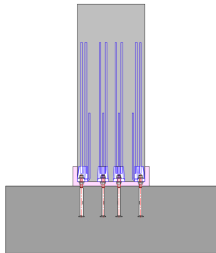


PRECAST PAD FOUNDATION (FOOTING) - MONACHINO 11.50 x 11.50 x 2,3 ft						
ITEM	U. M.	QUANTITY	US\$ / U. M.	COST	NOTE	
PRECAST PAD FOUNDATION (FOOTING)	Steel - Reinforcing bars (only bent - our production process does not need rebars binding)	lb	1653	US\$ 0,35	US\$578,55	Fe B 44k 6,7 lb/ft³ (The cost does not include overhead costs and business profits)
	Factory produced concrete	ft³	57,50	US\$ 1,80	US\$103,50	Rck 30 N/mm² S4 (The cost does not include overhead costs and business profits)
	Labor	Hours	3	US\$ 30,55	US\$ 91,65	
	Total				US\$773,70	
Overhead costs				US\$232,11	30%	
Total costs				US\$1.005,8		
Minimum ex-works sales price				US\$1.257,2	Coefficient 1,25 (The cost includes business profits)	
Amortization of the formworks				US\$ 18,00		
Royalty				US\$127,53	10%	
Transport			US\$ 610,00	US\$101,67	ml 125 / 6 precast elements	
Assembly				US\$ 43,00	4 precast foundations x 1 hour (2 unskilled workers + 1 crane)	
Minimum sales price with transport and assembly				US\$1.547,4		
Assembly system (Column-Foundation)	nr	4	US\$ 12,50	US\$ 50,00	4 Anchor Bolts and 8 Threaded Coupler	
ACTIVITIES THAT ARE CARRIED OUT IN THE WORKSITE	Excavation	ft³	386,98	US\$ 0,19	US\$ 73,53	12,2×12,2×2,6 ft (with overhead costs and business profits)
	Concrete in situ	ft³	246,68	US\$ 2,63	US\$648,76	Rck 30 N/mm² S4 (with overhead costs and business profits)
	Backfilling	ft³	43,13	US\$ 0,13	US\$ 5,39	Excavation - Foundation (with overhead costs and business profits)
TOTAL PRICE					US\$2.325,1	



TRADITIONAL CAST-IN-PLACE FOOTING WITH BOLTED CONNECTION SUCH AS PEIKKO / HALFEN - 11.50 x 11.50 x 2,3 ft							
ITEM	U. M.	QUANTITY	US\$ / U. M.	COST	NOTE		
ACTIVITIES THAT ARE CARRIED OUT IN THE WORKSITE	Steel - Reinforcing bars (footing base)	lb	1653	US\$ 0,61	US\$ 1.008,33	Fe B 44k 6,7 lb/ft³ (with overhead costs and business profits)	
	Formwork (footing base)	ft²	105,80	US\$ 3,05	US\$ 322,69	11,5x2,3x4 (with overhead costs and business profits)	
	Jig				US\$ 60,00		
	Transport and assembly of the jig				US\$ 60,00		
	Expansive mortar				US\$ 98,00	The cost includes preparation and pouring	
	Additional reinforcing bars to join the Jig to the footing reinforcing cage	lb	77	US\$ 0,61	US\$ 46,97	Fe B 44 k (with overhead costs and business profits)	
	Connection systems (Column-Foundation)	nr	12	US\$ 84,00	US\$ 1.008,00	Anchor Bolts and Column Shoes	
	Excavation (footing base)	ft³	446,19	US\$ 0,19	US\$ 84,78	13,1×13,1×2,6 ft (with overhead costs and business profits)	
	Concrete in situ (footing base)	ft³	304,18	US\$ 2,63	US\$ 799,98	Footing base 11,5×11,5×2,3 ft (with overhead costs and business profits)	
	Backfilling (footing base)	ft³	102,34	US\$ 0,13	US\$ 12,79	Excavation - Footing base (with overhead costs and business profits)	
	TOTAL PRICE					US\$ 3.501,54	
	PERCENTAGE SAVINGS					34%	
	SAVING MADE BY USING OUR CONSTRUCTION SYSTEM					US\$ 1.176,41	

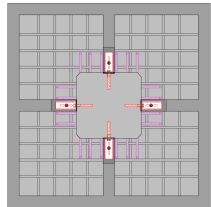
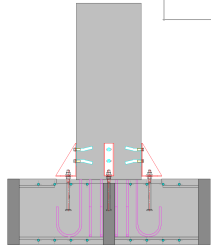
This solution is not recommended for Seismic Zones



CONSTRUCTION SYSTEMS COMPARISON - COST ANALYSIS -
Precast PAD Foundation VS Traditional cast-in-place footing with steel corrugated tubes



PRECAST PAD FOUNDATION (FOOTING) - MONACHINO 11.50 x 11.50 x 2,3 ft						
	ITEM	U. M.	QUANTITY	US\$ / U. M.	COST	NOTE
PRECAST PAD FOUNDATION (FOOTING)	Steel - Reinforcing bars (only bent - our production process does not need rebars binding)	lb	1653	US\$ 0,35	US\$ 578,55	Fe B 44k (The cost does not include overhead costs and business profits)
	Factory produced concrete	ft³	57,50	US\$ 1,80	US\$ 103,50	Rck 30 N/mm² S4 (The cost does not include overhead costs and business profits)
	Labor	Hours	3	US\$ 30,55	US\$ 91,65	
	Total				US\$ 773,70	
	Overhead costs				US\$ 232,11	30%
	Total costs				US\$1.005,81	
	Minimum ex-works sales price				US\$1.257,26	Coefficient 1,25 (The cost includes business profits)
	Amortization of the formworks				US\$ 18,00	
	Royalty				US\$ 127,53	10%
	Transport				US\$ 610,00	US\$ 101,67
Assembly				US\$ 43,00	4 precast foundations x 1 hour (2 unskilled workers + 1 crane)	
Minimum sales price with transport and assembly				US\$1.547,46		
Assembly system (Column-Foundation)	nr	4	US\$ 12,50	US\$ 50,00	4 Anchor Bolts and 8 Threaded Coupler	
ACTIVITIES THAT ARE CARRIED OUT IN THE WORKSITE	Excavation	ft³	386,98	US\$ 0,19	US\$ 73,53	12,2×12,2×2,6 ft (with overhead costs and business profits)
	Concrete in situ	ft³	246,68	US\$ 2,63	US\$ 648,76	Rck 30 N/mm² S4 (with overhead costs and business profits)
	Backfilling	ft³	43,13	US\$ 0,13	US\$ 5,39	Excavation - Foundation (with overhead costs and business profits)
TOTAL PRICE					US\$2.325,13	



TRADITIONAL CAST-IN-PLACE FOOTING WITH STEEL CORRUGATED TUBES - 11.50 x 11.50 x 2.6 ft						
	ITEM	U. M.	QUANTITY	US\$ / U. M.	COST	NOTE
ACTIVITIES THAT ARE CARRIED OUT IN THE WORKSITE	Steel - Reinforcing bars (footing base)	lb	1653	US\$ 0,61	US\$ 1.008,33	Fe B 44k (with overhead costs and business profits)
	Formwork (footing base)	ft²	119,60	US\$ 3,05	US\$ 364,78	11,5x2,6x4 (with overhead costs and business profits)
	Jig for 16 corrupted tubes				US\$ 245,00	
	Transport and assembly of the jig				US\$ 123,00	
	Expansive mortar				US\$ 281,00	The cost includes preparation and pouring
	Connection systems (Column-Foundation)	nr	4	US\$ 49,00	US\$ 196,00	Anchor Bolts and Column Shoes
	Excavation (footing base)	ft³	514,83	US\$ 0,19	US\$ 97,82	13,1×13,1×3 ft (with overhead costs and business profits)
	Concrete in situ (footing base)	ft³	343,85	US\$ 2,63	US\$ 904,33	Footing base 11,5×11,5×2,6 ft (with overhead costs and business profits)
	Backfilling (footing base)	ft³	118,08	US\$ 0,13	US\$ 14,76	Excavation - Footing base (with overhead costs and business profits)
	TOTAL PRICE					US\$3.235,01
PERCENTAGE SAVINGS					28%	
SAVING MADE BY USING OUR CONSTRUCTION SYSTEM					US\$ 909,88	

