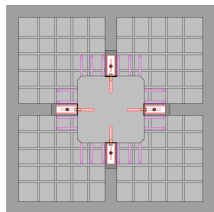
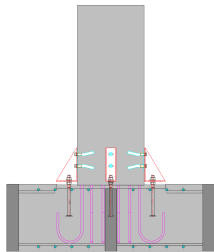


CONSTRUCTION SYSTEMS COMPARISON - COST ANALYSIS

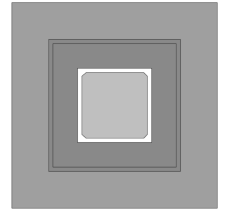
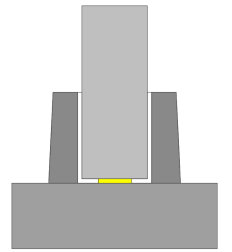
Precast PAD Foundation VS Traditional cast-in-place footing and pocket



PRECAST PAD FOUNDATION (FOOTING) - MONACHINO 3.00 x 3.00 x 0.6 m						
ITEM	U. M.	QUANTITY	€ / U. M.	COST	NOTE	
PRECAST PAD FOUNDATION (FOOTING)	Steel - Reinforcing bars (only bent - our production process does not need rebars binding)	Kg	500	€ 0,60	€ 300,00	Fe B 44 k 95kg/m³ (The cost does not include overhead costs and business profits)
	Factory produced concrete	m³	1,19	€ 51,80	€ 61,64	Rck 30 N/mm² S4 (The cost does not include overhead costs and business profits)
	Labor	Hours	3	€ 25,00	€ 75,00	
	Total				€ 436,64	
Overhead costs				€ 130,99	30%	
Total costs				€ 567,63		
Minimum ex-works sales price				€ 709,54	Coefficient 1,25 (The cost includes business profits)	
Amortization of the formworks				€ 14,70		
Royalty				€ 72,42	10%	
Transport			€ 500,00	€ 62,50	Km 200 / 8 precast elements	
Assembly				€ 35,00	4 precast foundation x 1 hour (2 unskilled workers + 1 crane)	
Minimum sales price with transport and assembly				€ 894,17		
Assembly system (Column-Foundation)	nr	4	€ 10,00	€ 40,00	4 Anchor Bolts and 8 Threaded Coupler	
ACTIVITIES THAT ARE CARRIED OUT IN THE WORKSITE	Excavation	m³	7,168	€ 5,00	€ 35,84	3,20x3,20x0,7 m (with overhead costs and business profits)
	Concrete in situ	m³	4,21	€ 75,00	€ 315,75	Rck 30 N/mm² S4 (with overhead costs and business profits)
	Backfilling	m³	0,868	€ 2,00	€ 1,74	Excavation - Foundation (with overhead costs and business profits)
TOTAL PRICE				€ 1.287,49		



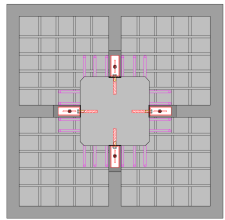
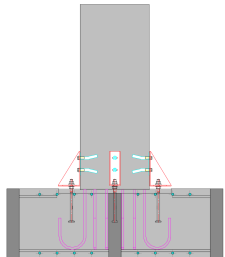
TRADITIONAL CAST-IN-PLACE FOOTING WITH POCKET (SOCKET) 3.00 x 3.00 x 0.6 m						
ITEM	U. M.	QUANTITY	€ / U. M.	COST	NOTE	
ACTIVITIES THAT ARE CARRIED OUT IN THE WORKSITE	Steel - Reinforcing bars (footing base)	Kg	500	€ 1,09	€ 545,00	Fe B 44 k 95kg/m³ (with overhead costs and business profits)
	Steel - Reinforcing bars (Pocket)	Kg	206,25	€ 1,09	€ 224,81	Fe B 44 k (with overhead costs and business profits)
	Formwork (footing base)	m²	7,2	€ 25,00	€ 180,00	3,00x4x0,60 m (with overhead costs and business profits)
	Formwork (Pocket)	m²	11	€ 25,00	€ 275,00	(1,50x1,10x4)+(1x1,10x4) (with overhead costs and business profits)
Excavation (Pocket)	m³	13,475	€ 5,00	€ 67,38	3,50x3,50x1,10 m (with overhead costs and business profits)	
Concrete in situ (Pocket)	m³	1,375	€ 75,00	€ 103,13	Pocket 1,50x1,50x1,10 m Rck 30 N/mm² S4 (with overhead costs and business profits)	
Backfilling (Pocket)	m³	11	€ 2,00	€ 22,00	Excavation - Pocket (with overhead costs and business profits)	
Excavation (footing base)	m³	8,575	€ 5,00	€ 42,88	3,50x3,50x0,70 m (with overhead costs and business profits)	
Concrete in situ (footing base)	m³	5,4	€ 75,00	€ 405,00	Footing base 3,00x3,00x0,60 m (with overhead costs and business profits)	
Backfilling (footing base)	m³	2,275	€ 2,00	€ 4,55	Excavation - Footing base (with overhead costs and business profits)	
Mortar for filling between column and pocket	m³	0,396	€ 75,00	€ 29,70		
TOTAL PRICE				€ 1.899,44		
PERCENTAGE SAVINGS				32%		
SAVING MADE BY USING OUR CONSTRUCTION SYSTEM				€ 611,94		



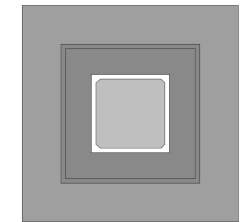
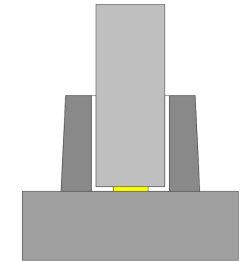
CONSTRUCTION SYSTEMS COMPARISON - COST ANALYSIS
Precast PAD Foundation VS Traditional cast-in-place footing and precast pocket



PRECAST PAD FOUNDATION (FOOTING) - MONACHINO 3.00 x 3.00 x 0.6 m						
ITEM	U. M.	QUANTITY	€ / U. M.	COST	NOTE	
PRECAST PAD FOUNDATION (FOOTING)	Steel - Reinforcing bars (only bent - our production process does not need rebars binding)	Kg	500	€ 0,60	€ 300,00	Fe B 44 k 95kg/m³ (The cost does not include overhead costs and business profits)
	Factory produced concrete	m³	1,19	€ 51,80	€ 61,64	Rck 30 N/mm² S4 (The cost does not include overhead costs and business profits)
	Labor	Hours	3	€ 25,00	€ 75,00	
	Total				€ 436,64	
	Overhead costs				€ 130,99	30%
	Total costs				€ 567,63	
	Minimum ex-works sales price				€ 709,54	Coefficient 1,25 (The cost includes business profits)
	Amortization of the formworks				€ 14,70	
	Royalty				€ 72,42	10%
	Transport			€ 500,00	€ 62,50	Km 200 / 8 precast elements
ACTIVITIES THAT ARE CARRIED OUT IN THE WORKSITE	Assembly			€ 35,00	4 precast foundation x 1 hour (2 unskilled workers + 1 crane)	
	Minimum sales price with transport and assembly			€ 894,17		
	Assembly system (Column-Foundation)	nr	4	€ 10,00	€ 40,00	4 Anchor Bolts and 8 Threaded Coupler
	Excavation	m³	7,168	€ 5,00	€ 35,84	3,20x3,20x0,7 m (with overhead costs and business profits)
Concrete in situ	m³	4,21	€ 75,00	€ 315,75	Rck 30 N/mm² S4 (with overhead costs and business profits)	
Backfilling	m³	0,868	€ 2,00	€ 1,74	Excavation - Foundation (with overhead costs and business profits)	
TOTAL PRICE				€ 1.287,49		



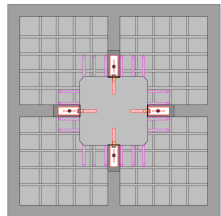
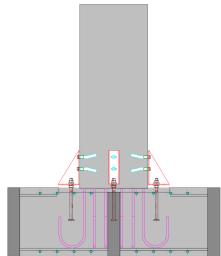
TRADITIONAL CAST-IN-PLACE FOOTING WITH PRECAST POCKET (SOCKET) 3.00 x 3.00 x 0.6 m						
ITEM	U. M.	QUANTITY	€ / U. M.	COST	NOTE	
PRECAST POCKET	Steel - Reinforcing bars (Precast Pocket)	Kg	206,25	€ 0,80	€ 165,00	Fe B 44 k (The cost does not include overhead costs and business profits)
	Factory produced concrete (Precast Pocket)	m³	1,375	€ 51,80	€ 71,23	Pocket 1,50x1,50x1,10 m Rck 30 N/mm² S4 (The cost does not include overhead costs and business profits)
	Labor	Hours	4	€ 25,00	€ 100,00	
	Total				€ 336,23	
	Overhead costs				€ 100,87	30%
	Total costs				€ 437,09	
	Minimum ex-works sales price				€ 546,37	Coefficient 1,25 (The cost includes business profits)
	Amortization of the formworks				€ 14,70	
	Transport			€ 500,00	€ 62,50	Km 200 / 8 precast elements
	Assembly				€ 35,00	4 precast pocket x 1 hour (2 unskilled workers + 1 crane)
ACTIVITIES THAT ARE CARRIED OUT IN THE WORKSITE	Minimum sales price with transport and assembly			€ 658,57		
	Excavation (Precast Pocket)	m³	13,475	€ 5,00	€ 67,38	3,50x3,50x1,10 m (with overhead costs and business profits)
	Excavation (footing base)	m³	8,575	€ 5,00	€ 42,88	3,50x3,50x0,70 m (with overhead costs and business profits)
	Formwork (footing base)	m²	7,2	€ 25,00	€ 180,00	3,00x4x0,60 m (with overhead costs and business profits)
	Steel - Reinforcing bars (footing base)	Kg	500	€ 1,09	€ 545,00	Fe B 44 k 95kg/m³ (with overhead costs and business profits)
	Concrete in situ (footing base)	m³	5,4	€ 75,00	€ 405,00	Footing base 3,00x3,00x0,60 m (with overhead costs and business profits)
	Backfilling (Pocket)	m³	11	€ 2,00	€ 22,00	Excavation - Pocket (with overhead costs and business profits)
	Backfilling (footing base)	m³	2,275	€ 2,00	€ 4,55	Excavation - Footing base (with overhead costs and business profits)
	Mortar for filling between column and pocket	m³	0,396	€ 75,00	€ 29,70	
	TOTAL PRICE				€ 1.955,07	
PERCENTAGE SAVINGS				34%		
SAVING MADE BY USING OUR CONSTRUCTION SYSTEM				€ 667,57		



CONSTRUCTION SYSTEMS COMPARISON - COST ANALYSIS -
Precast PAD Foundation VS Traditional cast-in-place footing with connection systems such as PEIKKO or HALFEN

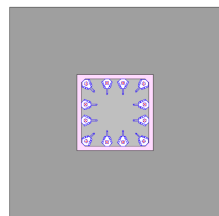
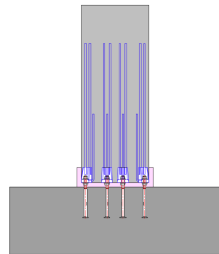


PRECAST PAD FOUNDATION (FOOTING) - MONACHINO 3.00 x 3.00 x 0.6 m						
ITEM	U. M.	QUANTITY	€ / U. M.	COST	NOTE	
PRECAST PAD FOUNDATION (FOOTING)	Steel - Reinforcing bars (only bent - our production process does not need rebars binding)	Kg	500	€ 0,60	€ 300,00	Fe B 44 k 95kg/m³ (The cost does not include overhead costs and business profits)
	Factory produced concrete	m³	1,19	€ 51,80	€ 61,64	Rck 30 N/mm² S4 (The cost does not include overhead costs and business profits)
	Labor	Hours	3	€ 25,00	€ 75,00	
	Total				€ 436,64	
Overhead costs				€ 130,99	30%	
Total costs				€ 567,63		
Minimum ex-works sales price				€ 709,54	Coefficient 1,25 (The cost includes business profits)	
Amortization of the formworks				€ 14,70		
Royalty				€ 72,42	10%	
Transport			€ 500,00	€ 62,50	Km 200 / 8 precast elements	
Assembly				€ 35,00	4 precast foundation x 1 hour (2 unskilled workers + 1 crane)	
Minimum sales price with transport and assembly				€ 894,17		
Assembly system (Column-Foundation)	nr	4	€ 10,00	€ 40,00	4 Anchor Bolts and 8 Threaded Coupler	
ACTIVITIES THAT ARE CARRIED OUT IN THE WORKSITE	Excavation	m³	7,168	€ 5,00	€ 35,84	3,20x3,20x0,7 m (with overhead costs and business profits)
	Concrete in situ	m³	4,21	€ 75,00	€ 315,75	Rck 30 N/mm² S4 (with overhead costs and business profits)
	Backfilling	m³	0,868	€ 2,00	€ 1,74	Excavation - Foundation (with overhead costs and business profits)
TOTAL PRICE				€ 1.287,49		



TRADITIONAL CAST-IN-PLACE FOOTING WITH BOLTED CONNECTION SUCH AS PEIKKO / HALFEN - 3.00 x 3.00 x 0.60 m						
ITEM	U. M.	QUANTITY	€ / U. M.	COST	NOTE	
ACTIVITIES THAT ARE CARRIED OUT IN THE WORKSITE	Steel - Reinforcing bars (footing base)	Kg	500	€ 1,09	€ 545,00	Fe B 44 k 95kg/m³ (with overhead costs and business profits)
	Formwork (footing base)	m²	7,2	€ 25,00	€ 180,00	3,00x4x0,60 m (with overhead costs and business profits)
	Jig				€ 50,00	
	Transport and assembly of the jig				€ 50,00	
	Expansive mortar				€ 80,00	The cost includes preparation and pouring
	Additional reinforcing bars to join the Jig to the footing reinforcing cage	Kg	25	€ 1,09	€ 27,25	Fe B 44 k (with overhead costs and business profits)
	Connection systems (Column-Foundation)	nr	8	€ 70,00	€ 560,00	Anchor Bolts and Column Shoes
	Excavation (footing base)	m³	8,575	€ 5,00	€ 42,88	3,50x3,50x0,70 m (with overhead costs and business profits)
	Concrete in situ (footing base)	m³	5,4	€ 75,00	€ 405,00	Footing base 3,00x3,00x0,60 m (with overhead costs and business profits)
	Backfilling (footing base)	m³	2,275	€ 2,00	€ 4,55	Excavation - Footing base (with overhead costs and business profits)
	TOTAL PRICE				€ 1.944,68	
	PERCENTAGE SAVINGS				34%	
	SAVING MADE BY USING OUR CONSTRUCTION SYSTEM				€ 657,18	

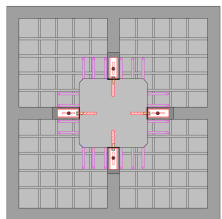
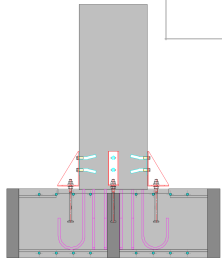
This solution is not recommended for Seismic Zones



CONSTRUCTION SYSTEMS COMPARISON - COST ANALYSIS -
Precast PAD Foundation VS Traditional cast-in-place footing with steel corrugated tubes



PRECAST PAD FOUNDATION (FOOTING) - MONACHINO 3.00 x 3.00 x 0.6 m						
ITEM	U. M.	QUANTITY	€ / U. M.	COST	NOTE	
PRECAST PAD FOUNDATION (FOOTING)	Steel - Reinforcing bars (only bent - our production process does not need rebars binding)	Kg	500	€ 0,60	€ 300,00	Fe B 44 k (The cost does not include overhead costs and business profits)
	Factory produced concrete	m³	1,19	€ 51,80	€ 61,64	Rck 30 N/mm² S4 (The cost does not include overhead costs and business profits)
	Labor	Hours	3	€ 25,00	€ 75,00	
	Total				€ 436,64	
	Overhead costs				€ 130,99	30%
	Total costs				€ 567,63	
	Minimum ex-works sales price				€ 709,54	Coefficient 1,25 (The cost includes business profits)
	Amortization of the formworks				€ 14,70	
	Royalty				€ 72,42	10%
	Transport			€ 500,00	€ 62,50	Km 200 / 8 precast elements
	Assembly				€ 35,00	4 precast foundation x 1 hour (2 unskilled workers + 1 crane)
	Minimum sales price with transport and assembly				€ 894,17	
	Assembly system (Column-Foundation)	nr	4	€ 10,00	€ 40,00	4 Anchor Bolts and 8 Threaded Coupler
	ACTIVITIES THAT ARE CARRIED OUT IN THE WORKSITE	Excavation	m³	7,168	€ 5,00	€ 35,84
Concrete in situ		m³	4,21	€ 75,00	€ 315,75	Rck 30 N/mm² S4 (with overhead costs and business profits)
Backfilling		m³	0,868	€ 2,00	€ 1,74	Excavation - Foundation (with overhead costs and business profits)
TOTAL PRICE				€	1.287,49	



TRADITIONAL CAST-IN-PLACE FOOTING WITH STEEL CORRUGATED TUBES - 3.00 x 3.00 x 0.80 m						
ITEM	U. M.	QUANTITY	€ / U. M.	COST	NOTE	
ACTIVITIES THAT ARE CARRIED OUT IN THE WORKSITE	Steel - Reinforcing bars (footing base)	Kg	500	€ 1,09	€ 545,00	Fe B 44 k (with overhead costs and business profits)
	Formwork (footing base)	m²	9,6	€ 25,00	€ 240,00	3,00x4x0,80 m (with overhead costs and business profits)
	Jig for 16 corrugated tubes				€ 200,00	
	Transport and assembly of the jig				€ 100,00	
	Expansive mortar				€ 230,00	The cost includes preparation and pouring
	Connection systems (Column-Foundation)	nr	4	€ 40,00	€ 160,00	Anchor Bolts and Column Shoes
	Excavation (footing base)	m³	11,025	€ 5,00	€ 55,13	3,50x3,50x0,90 m (with overhead costs and business profits)
	Concrete in situ (footing base)	m³	7,2	€ 75,00	€ 540,00	Footing base 3,00x3,00x0,80 m (with overhead costs and business profits)
	Backfilling (footing base)	m³	2,925	€ 2,00	€ 5,85	Excavation - Footing base (with overhead costs and business profits)
	TOTAL PRICE				€	2.075,98
	PERCENTAGE SAVINGS					38%
	SAVING MADE BY USING OUR CONSTRUCTION SYSTEM				€	788,48

