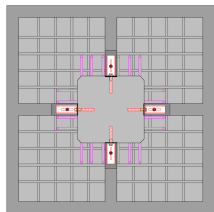
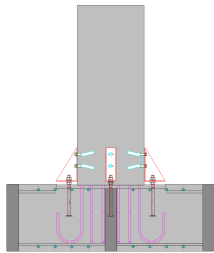


CONSTRUCTION SYSTEMS COMPARISON - COST ANALYSIS

Precast PAD Foundation VS Traditional cast-in-place footing and pocket



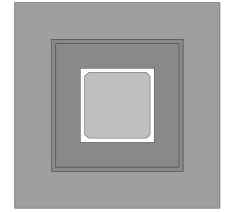
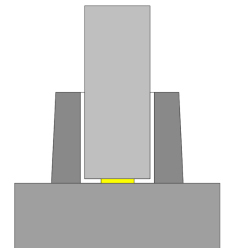
PRECAST PAD FOUNDATION (FOOTING) - MONACHINO 2.50 x 2.50 x 0,50 m					
ITEM	U. M.	QUANTITY	€ / U. M.	COST	NOTE
Steel - Reinforcing bars (only bent - our production process does not need rebars binding)	Kg	220	€ 0,60	€ 132,00	Fe B 44 k 70kg/m³ (The cost does not include overhead costs and business profits)
Factory produced concrete	m³	0,81	€ 51,80	€ 41,96	Rck 30 N/mm² S4 (The cost does not include overhead costs and business profits)
Labor	Hours	3	€ 25,00	€ 75,00	
Total				€ 248,96	
Overhead costs				€ 74,69	30%
Total costs				€ 323,65	
Minimum ex-works sales price				€ 404,56	Coefficient 1,25 (The cost includes business profits)
Amortization of the formworks				€ 11,70	
Royalty				€ 41,63	10%
Transport			€ 500,00	€ 35,71	Km 200 / 14 precast elements
Assembly				€ 35,00	4 precast foundation x 1 hour (2 unskilled workers + 1 crane)
Minimum sales price with transport and assembly				€ 528,60	
Assembly system (Column-Foundation)	nr	4	€ 10,00	€ 40,00	4 Anchor Bolts and 8 Threaded Coupler
Excavation	m³	4,374	€ 5,00	€ 21,87	2,70x2,70x0,60 m (with overhead costs and business profits)
Concrete in situ	m³	2,315	€ 75,00	€ 173,63	Rck 30 N/mm² S4 (with overhead costs and business profits)
Backfilling	m³	0,624	€ 2,00	€ 1,25	Excavation - Foundation (with overhead costs and business profits)
TOTAL PRICE				€ 765,34	



ACTIVITIES THAT ARE CARRIED OUT IN THE WORKSITE

TRADITIONAL CAST-IN-PLACE FOOTING WITH POCKET (SOCKET) 2.50 x 2.50 x 0,50 m					
ITEM	U. M.	QUANTITY	€ / U. M.	COST	NOTE
Steel - Reinforcing bars (footing base)	Kg	220	€ 1,09	€ 239,80	Fe B 44 k 70kg/m³ (with overhead costs and business profits)
Steel - Reinforcing bars (Pocket)	Kg	173,25	€ 1,09	€ 188,84	Fe B 44 k (with overhead costs and business profits)
Formwork (footing base)	m²	5	€ 25,00	€ 125,00	2,50x4x0,50 m (with overhead costs and business profits)
Formwork (Pocket)	m²	9,24	€ 25,00	€ 231,00	(1,3x1,1x4)+(0,8x1,1x4) (with overhead costs and business profits)
Excavation (Pocket)	m³	9,9	€ 5,00	€ 49,50	3,00x3,00x1,10 m (with overhead costs and business profits)
Concrete in situ (Pocket)	m³	1,155	€ 75,00	€ 86,63	Pocket 1,30x1,30x1,10 m Rck 30 N/mm² S4 (with overhead costs and business profits)
Backfilling (Pocket)	m³	8,041	€ 2,00	€ 16,08	Excavation - Pocket (with overhead costs and business profits)
Excavation (footing base)	m³	5,4	€ 5,00	€ 27,00	3,00x3,00x0,60 m (with overhead costs and business profits)
Concrete in situ (footing base)	m³	3,125	€ 75,00	€ 234,38	Footing base 2,50x2,50x0,50 m (with overhead costs and business profits)
Backfilling (footing base)	m³	1,65	€ 2,00	€ 3,30	Excavation - Footing base (with overhead costs and business profits)
Mortar for filling between column and pocket	m³	0,336	€ 75,00	€ 25,20	
TOTAL PRICE				€ 1.226,72	
PERCENTAGE SAVINGS				38%	
SAVING MADE BY USING OUR CONSTRUCTION SYSTEM				€ 461,38	

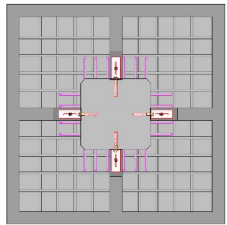
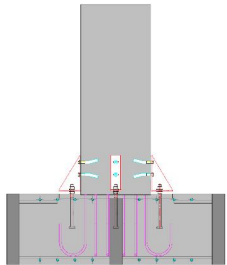
ACTIVITIES THAT ARE CARRIED OUT IN THE WORKSITE



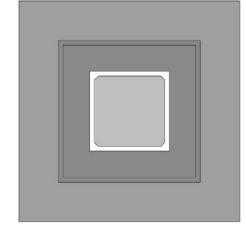
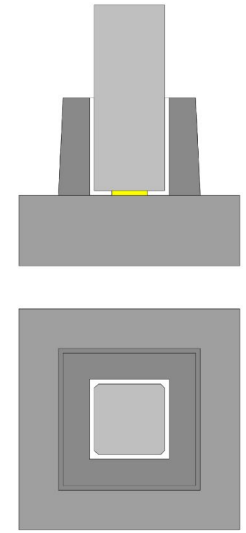
CONSTRUCTION SYSTEMS COMPARISON - COST ANALYSIS
Precast PAD Foundation VS Traditional cast-in-place footing and precast pocket



PRECAST PAD FOUNDATION (FOOTING) - MONACHINO 2.50 x 2.50 x 0,50 m						
ITEM	U. M.	QUANTITY	€ / U. M.	COST	NOTE	
PRECAST PAD FOUNDATION (FOOTING)	Steel - Reinforcing bars (only bent - our production process does not need rebars binding)	Kg	220	€ 0,60	€ 132,00	Fe B 44 k 70kg/m³ (The cost does not include overhead costs and business profits)
	Factory produced concrete	m³	0,81	€ 51,80	€ 41,96	Rck 30 N/mm² S4 (The cost does not include overhead costs and business profits)
	Labor	Hours	3	€ 25,00	€ 75,00	
	Total				€ 248,96	
Overhead costs				€ 74,69	30%	
Total costs				€ 323,65		
Minimum ex-works sales price				€ 404,56	Coefficient 1,25 (The cost includes business profits)	
Amortization of the formworks				€ 11,70		
Royalty				€ 41,63	10%	
Transport			€ 500,00	€ 35,71	Km 200 / 14 precast elements	
Assembly				€ 35,00	4 precast foundation x 1 hour (2 unskilled workers + 1 crane)	
Minimum sales price with transport and assembly				€ 528,60		
Assembly system (Column-Foundation)	nr	4	€ 10,00	€ 40,00	4 Anchor Bolts and 8 Threaded Coupler	
ACTIVITIES THAT ARE CARRIED OUT IN THE WORKSITE	Excavation	m³	4,374	€ 5,00	€ 21,87	2,70x2,70x0,60 m (with overhead costs and business profits)
	Concrete in situ	m³	2,315	€ 75,00	€ 173,63	Rck 30 N/mm² S4 (with overhead costs and business profits)
	Backfilling	m³	0,624	€ 2,00	€ 1,25	Excavation - Foundation (with overhead costs and business profits)
TOTAL PRICE				€ 765,34		



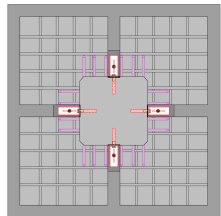
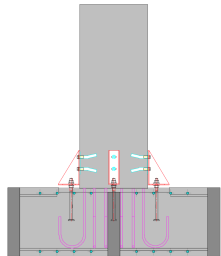
TRADITIONAL CAST-IN-PLACE FOOTING WITH PRECAST POCKET (SOCKET) 2.50 x 2.50 x 0,50 m						
ITEM	U. M.	QUANTITY	€ / U. M.	COST	NOTE	
PRECAST POCKET	Steel - Reinforcing bars (Precast Pocket)	Kg	173,25	€ 0,80	€ 138,60	Fe B 44 k (The cost does not include overhead costs and business profits)
	Factory produced concrete (Precast Pocket)	m³	1,155	€ 51,80	€ 59,83	Pocket 1,30x1,30x1,10 m Rck 30 N/mm² S4 (The cost does not include overhead costs and business profits)
	Labor	Hours	4	€ 25,00	€ 100,00	
	Total				€ 298,43	
Overhead costs				€ 89,53	30%	
Total costs				€ 387,96		
Minimum ex-works sales price				€ 484,95	Coefficient 1,25 (The cost includes business profits)	
Amortization of the formworks				€ 11,70		
Transport			€ 500,00	€ 55,56	Km 200 / 9 precast elements	
Assembly				€ 35,00	4 precast pocket x 1 hour (2 unskilled workers + 1 crane)	
Minimum sales price with transport and assembly				€ 587,20		
ACTIVITIES THAT ARE CARRIED OUT IN THE WORKSITE	Excavation (Precast Pocket)	m³	9,9	€ 5,00	€ 49,50	3,00x3,00x1,10 m (with overhead costs and business profits)
	Excavation (footing base)	m³	5,4	€ 5,00	€ 27,00	3,00x3,00x0,60 m (with overhead costs and business profits)
	Formwork (footing base)	m²	5	€ 25,00	€ 125,00	2,50x4x0,50 (with overhead costs and business profits)
	Steel - Reinforcing bars (footing base)	Kg	220	€ 1,09	€ 239,80	Fe B 44 k 70kg/m³ (with overhead costs and business profits)
	Concrete in situ (footing base)	m³	3,125	€ 75,00	€ 234,38	Footing base 2,50x2,50x0,50 m (with overhead costs and business profits)
	Backfilling (Precast Pocket)	m³	8,041	€ 2,00	€ 16,08	Excavation - Pocket (with overhead costs and business profits)
	Backfilling (footing base)	m³	1,65	€ 2,00	€ 3,30	Excavation - Footing base (with overhead costs and business profits)
	Mortar for filling between column and pocket	m³	0,336	€ 75,00	€ 25,20	
TOTAL PRICE				€ 1.307,46		
PERCENTAGE SAVINGS				41%		
SAVING MADE BY USING OUR CONSTRUCTION SYSTEM				€ 542,12		



CONSTRUCTION SYSTEMS COMPARISON - COST ANALYSIS -
Precast PAD Foundation VS Traditional cast-in-place footing with connection systems such as PEIKKO or HALFEN

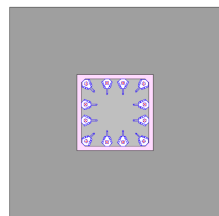
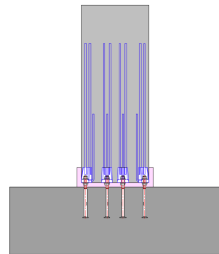


PRECAST PAD FOUNDATION (FOOTING) - MONACHINO 2.50 x 2.50 x 0,50 m						
ITEM	U. M.	QUANTITY	€ / U. M.	COST	NOTE	
PRECAST PAD FOUNDATION (FOOTING)	Steel - Reinforcing bars (only bent - our production process does not need rebars binding)	Kg	220	€ 0,60	€ 132,00	Fe B 44 k 70kg/m³ (The cost does not include overhead costs and business profits)
	Factory produced concrete	m³	0,81	€ 51,80	€ 41,96	Rck 30 N/mm² S4 (The cost does not include overhead costs and business profits)
	Labor	Hours	3	€ 25,00	€ 75,00	
	Total				€ 248,96	
Overhead costs				€ 74,69	30%	
Total costs				€ 323,65		
Minimum ex-works sales price				€ 404,56	Coefficient 1,25 (The cost includes business profits)	
Amortization of the formworks				€ 11,70		
Royalty				€ 41,63	10%	
Transport			€ 500,00	€ 35,71	Km 200 / 14 precast elements	
Assembly				€ 35,00	4 precast foundation x 1 hour (2 unskilled workers + 1 crane)	
Minimum sales price with transport and assembly				€ 528,60		
Assembly system (Column-Foundation)	nr	4	€ 10,00	€ 40,00	4 Anchor Bolts and 8 Threaded Coupler	
ACTIVITIES THAT ARE CARRIED OUT IN THE WORKSITE	Excavation	m³	4,374	€ 5,00	€ 21,87	2,70x2,70x0,60 m (with overhead costs and business profits)
	Concrete in situ	m³	2,315	€ 75,00	€ 173,63	Rck 30 N/mm² S4 (with overhead costs and business profits)
	Backfilling	m³	0,624	€ 2,00	€ 1,25	Excavation - Foundation (with overhead costs and business profits)
TOTAL PRICE				€ 765,34		



TRADITIONAL CAST-IN-PLACE FOOTING WITH BOLTED CONNECTION SUCH AS PEIKKO / HALFEN - 2.50 x 2.50 x 0,50 m						
ITEM	U. M.	QUANTITY	€ / U. M.	COST	NOTE	
ACTIVITIES THAT ARE CARRIED OUT IN THE WORKSITE	Steel - Reinforcing bars (footing base)	Kg	220	€ 1,09	€ 239,80	Fe B 44 k 70kg/m³ (with overhead costs and business profits)
	Formwork (footing base)	m²	5	€ 25,00	€ 125,00	2.50x4x0,50 m (with overhead costs and business profits)
	Jig				€ 50,00	
	Transport and assembly of the jig				€ 50,00	
	Expansive mortar				€ 80,00	The cost includes preparation and pouring
	Additional reinforcing bars to join the Jig to the footing reinforcing cage	Kg	20	€ 1,09	€ 21,80	Fe B 44 k (with overhead costs and business profits)
	Connection systems (Column-Foundation)	nr	6	€ 60,00	€ 360,00	Anchor Bolts and Column Shoes
	Excavation (footing base)	m³	5,4	€ 5,00	€ 27,00	3,00x3,00x0,60 m (with overhead costs and business profits)
	Concrete in situ (footing base)	m³	3,125	€ 75,00	€ 234,38	Rck 30 N/mm² S4 (with overhead costs and business profits)
	Backfilling (footing base)	m³	1,65	€ 2,00	€ 3,30	Excavation - Foundation (with overhead costs and business profits)
	TOTAL PRICE				€ 1.191,28	
	PERCENTAGE SAVINGS				36%	
	SAVING MADE BY USING OUR CONSTRUCTION SYSTEM				€ 425,94	

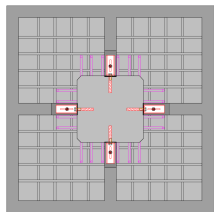
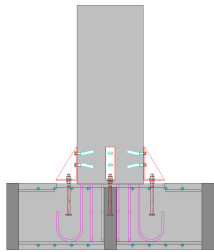
This solution is not recommended for Seismic Zones



CONSTRUCTION SYSTEMS COMPARISON - COST ANALYSIS -
Precast PAD Foundation VS Traditional cast-in-place footing with steel corrugated tubes



PRECAST PAD FOUNDATION (FOOTING) - MONACHINO 2.50 x 2.50 x 0,50 m						
ITEM	U. M.	QUANTITY	€ / U. M.	COST	NOTE	
PRECAST PAD FOUNDATION (FOOTING)	Steel - Reinforcing bars (only bent - our production process does not need rebars binding)	Kg	220	€ 0,60	€ 132,00	Fe B 44 k (The cost does not include overhead costs and business profits)
	Factory produced concrete	m³	0,81	€ 51,80	€ 41,96	Rck 30 N/mm² S4 (The cost does not include overhead costs and business profits)
	Labor	Hours	3	€ 25,00	€ 75,00	
	Total				€ 248,96	
Overhead costs				€ 74,69	30%	
Total costs				€ 323,65		
Minimum ex-works sales price				€ 404,56	Coefficient 1,25 (The cost includes business profits)	
Amortization of the formworks				€ 11,70		
Royalty				€ 41,63	10%	
Transport			€ 500,00	€ 35,71	Km 200 / 14 precast elements	
Assembly				€ 35,00	4 precast foundation x 1 hour (2 unskilled workers + 1 crane)	
Minimum sales price with transport and assembly				€ 528,60		
Assembly system (Column-Foundation)	nr	4	€ 10,00	€ 40,00	4 Anchor Bolts and 8 Threaded Coupler	
ACTIVITIES THAT ARE CARRIED OUT IN THE WORKSITE	Excavation	m³	4,374	€ 5,00	€ 21,87	2,70x2,70x0,60 m (with overhead costs and business profits)
	Concrete in situ	m³	2,315	€ 75,00	€ 173,63	Rck 30 N/mm² S4 (with overhead costs and business profits)
	Backfilling	m³	0,624	€ 2,00	€ 1,25	Excavation - Foundation (with overhead costs and business profits)
TOTAL PRICE				€ 765,34		



TRADITIONAL CAST-IN-PLACE FOOTING WITH STEEL CORRUGATED TUBES - 2.50 x 2.50 x 0,80 m						
ITEM	U. M.	QUANTITY	€ / U. M.	COST	NOTE	
ACTIVITIES THAT ARE CARRIED OUT IN THE WORKSITE	Steel - Reinforcing bars (footing base)	Kg	220	€ 1,09	€ 239,80	Fe B 44 k (with overhead costs and business profits)
	Formwork (footing base)	m²	8	€ 25,00	€ 200,00	2,50x4x0,80 m (with overhead costs and business profits)
	Jig for 16 corrugated tubes				€ 200,00	
	Transport and assembly of the jig				€ 100,00	
	Expansive mortar				€ 230,00	The cost includes preparation and pouring
	Connection systems (Column-Foundation)	nr	4	€ 40,00	€ 160,00	Anchor Bolts and Column Shoes
	Excavation (footing base)	m³	8,1	€ 5,00	€ 40,50	3,00x3,00x0,90 m (with overhead costs and business profits)
	Concrete in situ (footing base)	m³	5	€ 75,00	€ 375,00	Rck 30 N/mm² S4 (with overhead costs and business profits)
	Backfilling (footing base)	m³	2,475	€ 2,00	€ 4,95	Excavation - Foundation (with overhead costs and business profits)
	TOTAL PRICE				€ 1.550,25	
PERCENTAGE SAVINGS				51%		
SAVING MADE BY USING OUR CONSTRUCTION SYSTEM				€ 784,91		

